

# THE **BASIC BAND** BOOK

by Mr. Glynn

# CLARINET

YOU ARE CREATIVE  
YOU ARE A MUSICIAN  
YOU CAN DO THIS

THIS BOOK BELONGS TO \_\_\_\_\_



for helpful videos, go to:

**[www.BasicBand.info](http://www.BasicBand.info)**



The contents of this book are licensed under a  
Creative Commons Attribution-NonCommercial 4.0 International License.

# CLARINET **BASICS**

Use the online videos listed with each topic to help you at home.  
[www.BasicBand.info](http://www.BasicBand.info)

## EMBOUCHURE

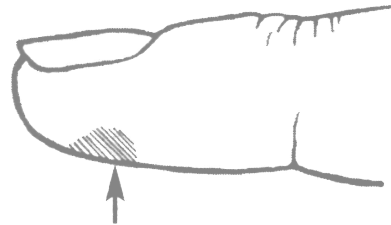
- Say “**VEE**”
- Bite down
- Tighten your lips around the mouth piece
- Blow

**VEE**

– Clarinet Video Lesson 3 –

## HOLDING

- Left hand on top; Right hand on bottom
- Hold imaginary water bottle
- Finger **TIPS** only



– Clarinet Video Lessons 4 & 5 –

## BREATHING

- in on “OH” out on “TOH”
- Never stop the air
- Stop your sound by breathing in

**OH**  
**TOH**

## TONGUING

- Say “THE”
- Tongue goes against the bottom of your top teeth.
- The reed never stops vibrating. It is only dampened.
- You should still hear a sound when your tongue is resting on the reed.

**THE**

– Clarinet Video Lesson 7–

## TONE QUALITY

- Play on the mouthpiece and barrel only
- The tone should be an **F#**
- Use a tuner or piano

**F#**

# THE **MUSICAL** ALPHABET

Online Video Lessons for Everyone  
[www.BasicBand.info](http://www.BasicBand.info)

FORWARDS →

E F G A B C D E F G A B C

← BACKWARDS

A B C D E F G F E D C B A

## Q & A

---

- 1) What letter comes after **G** ?
  
- 2) When we move *forwards* in the alphabet, does the sound go up or down?
  
- 3) When we move *backwards* in the alphabet, does the sound go up or down?

## PENCIL GAMES

---

*WITHOUT looking at the previous page, fill in the missing letters:*

*forwards:*

1) **A** \_ \_ **D** \_ \_ \_ \_ **C** \_ \_

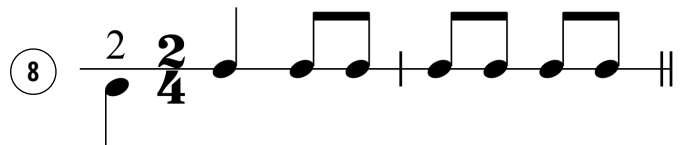
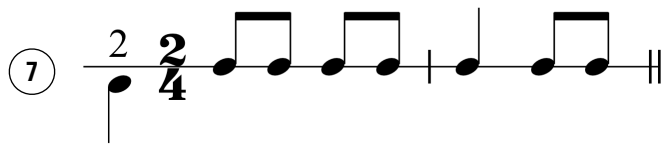
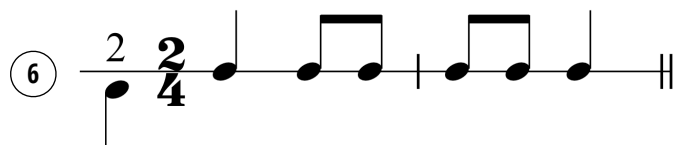
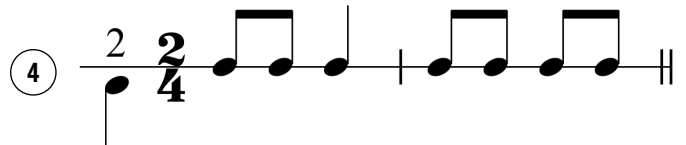
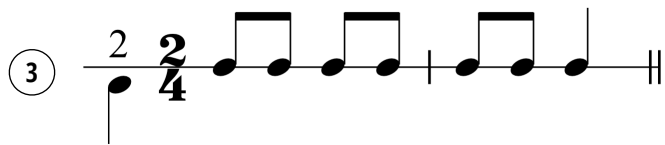
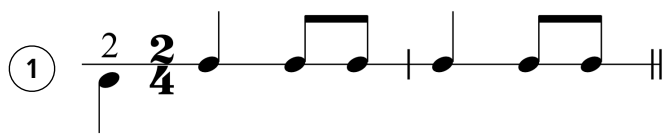
2) **E** \_ \_ \_ **B** \_ \_ \_ **F** \_ \_ \_

*backwards:*

3) **C** **B** \_ \_ **F** \_ \_ \_ **A** \_ \_

4) **F** \_ \_ \_ \_ **G** \_ \_ \_ **C** \_

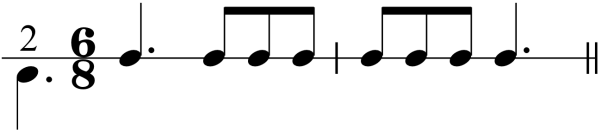
# DUPLE RHYTHM PATTERNS



Be expressive when performing with your voice and with your instrument!

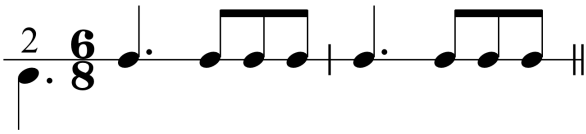
# TRIPLE RHYTHM PATTERNS

① 

② 


③ 

④ 

⑤ 

⑥ 

⑦ 

⑧ 

Be expressive when performing with your voice and with your instrument!

LEFT HAND



RIGHT HAND



Clarinet Video Lessons 6, 8, & 9  
[www.BasicBand.info](http://www.BasicBand.info)

# FIRST FIVE NOTES



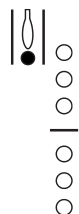
**G**

SO



**F**

FA



**E**

MI



**D**

RE



**C**

DO





# DUPLE SONGS

## HOT CROSS BUNS

MI RE **DO** (rest) | MI RE **DO** (rest) | **DO-DO-DO-DO** RE-RE-RE-RE | MI RE **DO** (rest) |

## MARY HAD A LITTLE LAMB

MI RE **DO** RE | MI MI MI (rest) | RE RE RE (rest) | MI SO SO (rest) |

MI RE **DO** RE | MI MI MI (rest) | RE RE MI RE | **DO** ----- |

## GO TELL AUNT RHODIE

MI ----- MI RE | **DO** ----- **DO** (rest) | RE ----- RE FA | MI RE **DO** (rest) |

SO ----- SO FA | MI ----- MI (rest) | RE FA MI RE | **DO** ----- |

### LIGHTLY ROW

SO MI MI (rest) | FA RE RE (rest) | **DO** RE MI FA | SO SO SO (rest) |

SO MI MI (rest) | FA RE RE (rest) | **DO** MI SO SO | **DO** ----- |

### AU CLAIRE DE LA LUNE

**DO DO DO** RE | MI ----- RE (rest) | **DO** MI RE RE | **DO** ----- |

### TWINKLE LITTLE STAR

**DO DO** SO SO | LA LA SO (rest) | FA FA MI MI | RE RE **DO** (rest) |

SO SO FA FA | MI MI RE (rest) | SO SO FA FA | MI MI RE (rest) |

### SKIP TO MY LOU

MI MI-MI **DO-DO-DO** | MI MI SO (rest) | RE RE-RE TI-TI-TI | RE RE FA (rest) |

MI MI-MI **DO-DO-DO** | MI MI SO (rest) | RE MI-FA MI RE | **DO** ----- **DO** (rest) |

# TRIPLE SONGS

## ROW YOUR BOAT

**DO** - - | **DO** - - | **DO** - RE | MI - - | MI - RE | MI - FA | SO - - | - - - |  
**DO DO DO** | SO SO SO | MI MI MI | **DO DO DO** | SO - FA | MI - RE | **DO** - - | - - - |

## RING AROUND THE ROSEY

SO - SO | MI - LA | SO - - | MI - - | SO - SO | MI - LA | SO - - | MI - - |  
SO - - | MI - - | SO - - | MI - MI | SO - - | SO - - | **DO** - - | - - - |

## FARMER IN THE DELL

**DO** - **DO** | **DO** - **DO** | **DO** - - | - - RE | MI - MI | MI - MI | MI - - | - - - |  
SO - - | SO - LA | SO - MI | **DO** - RE | MI - MI | RE - RE | **DO** - - | - - - |

### POP GOES THE WEASEL

**DO** - **DO** | RE - RE | MI SO MI | **DO** - SO | **DO** - **DO** | RE - FA | MI - - | **DO** - - |  
**DO** - **DO** | RE - RE | MI SO MI | **DO** - - | SO - - | RE - FA | MI - - | **DO** - - |

### THE ITSY-BITSY SPIDER

| **DO** - **DO** | **DO** - RE | MI - - | MI - MI | RE - **DO** | RE - MI | **DO** - - | - - - |  
MI - - | MI - FA | SO - - | SO - - | FA - MI | FA - SO | MI - - | - - - |  
**DO** - **DO** | **DO** - RE | MI - - | MI - MI | RE - **DO** | RE - MI | **DO** - - | SO - SO |  
**DO** - **DO** | **DO** - RE | MI - - | MI - MI | RE - **DO** | RE - MI | **DO** - - | - - - |

### THREE BLIND MICE

MI - - | RE - - | **DO** - - | - - - | MI - - | RE - - | **DO** - - | - - - |  
SO - - | FA - FA | MI - - | - - - | SO - - | FA - FA | MI - - | - - SO |  
**DO** - **DO** | TI LA TI | **DO** - SO | SO - SO | **DO** - **DO** | TI LA TI | **DO** - SO | SO - SO |  
**DO** - **DO** | TI LA TI | **DO** - SO | SO - FA | MI - - | RE - - | **DO** - - | - - - |

# CHROMATIC SCALE

**G**      **G<sup>#</sup>**      **A**      **A<sup>#</sup>**      **B**      **C**

OR      OR

**A<sup>b</sup>**      **B<sup>b</sup>**

1      1      2      2      3      3

<b>b</b> flat makes a note <b>lower</b>	<b>#</b> sharp makes a note <b>higher</b>
--	--

C#		D#		F#	
OR	D	OR	E	F	OR
D <sup>b</sup>		E <sup>b</sup>		G <sup>b</sup>	G

### ALWAYS REMEMBER

- The **Chromatic Scale** is when you play every note on the instrument, in order, up or down.
- When you go up, use sharps (#). When you go down, use flats (b).
- It can start and end on any note.



